

"Iolanthe"

Sullivan

Overture

Andante 2/6

Andante 3/4

Allegro giovioso

A B C

D E

F

G H J K L M

N O

P R S

T U

V W

X Y

Z AA

AB AC

II TROMBONE
2

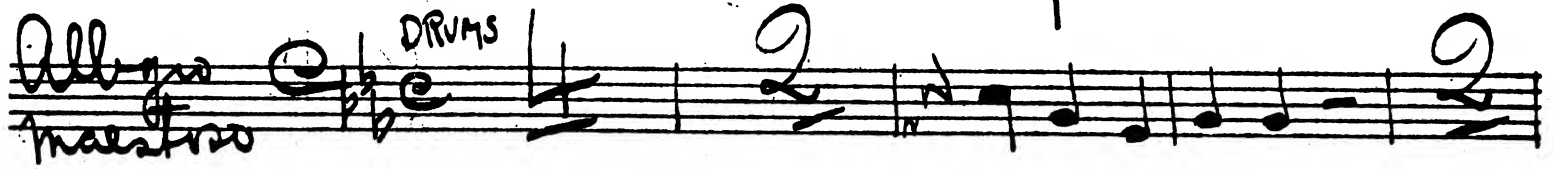
Act One

No 1 to 5 Facet

II TROMBONE

No 6 - Entrance + Chorus of Peter

All-gro *maestro* DRUMS



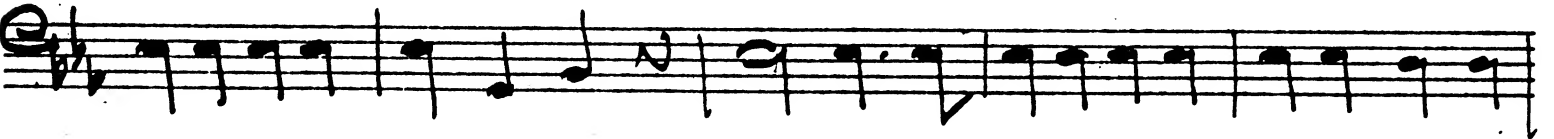
The first staff contains drum notation with a double bar line and a '2' indicating a two-measure rest. The tempo is marked 'All-gro' and 'maestro'. The key signature has one flat (B-flat).



A musical staff containing a sequence of eighth notes, starting with a quarter rest followed by a series of eighth notes.



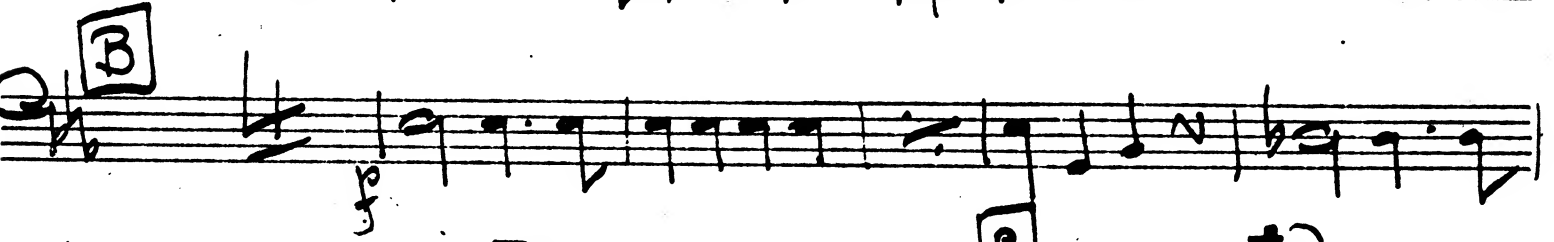
A musical staff with a sequence of eighth notes. A boxed letter 'A' is placed above the staff, indicating a specific measure.



A musical staff with a sequence of eighth notes, continuing the melodic line.



A musical staff with a sequence of eighth notes, continuing the melodic line.



A musical staff with a sequence of eighth notes. A boxed letter 'B' is placed above the staff, indicating a specific measure.



A musical staff with a sequence of eighth notes. A boxed letter 'C' is placed above the staff, indicating a specific measure.



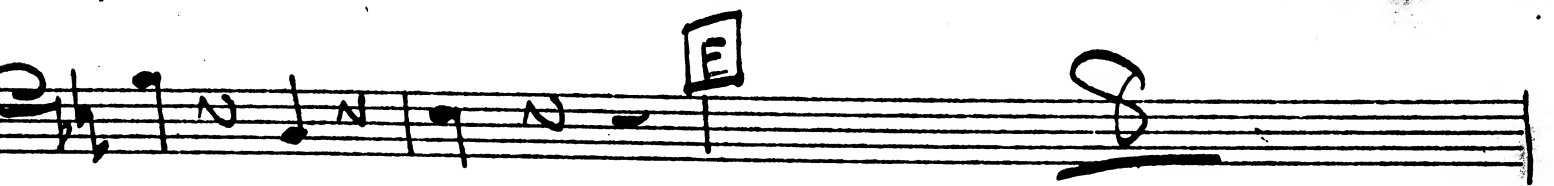
A musical staff with a sequence of eighth notes, continuing the melodic line.



A musical staff with a sequence of eighth notes. A boxed letter 'D' is placed above the staff, indicating a specific measure.



A musical staff with a sequence of eighth notes, continuing the melodic line.

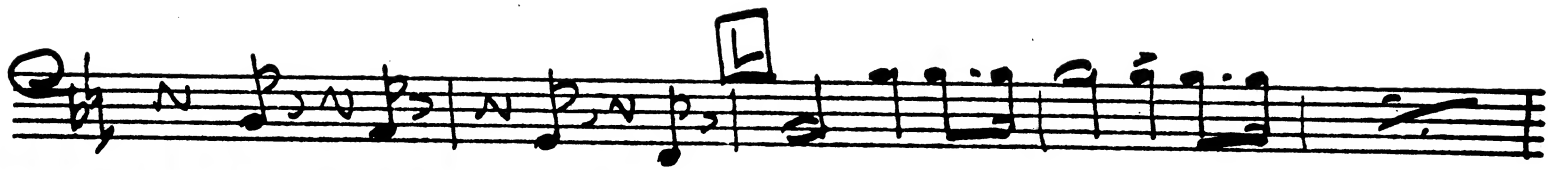


A musical staff with a sequence of eighth notes. A boxed letter 'E' is placed above the staff, indicating a specific measure. The staff ends with a double bar line.

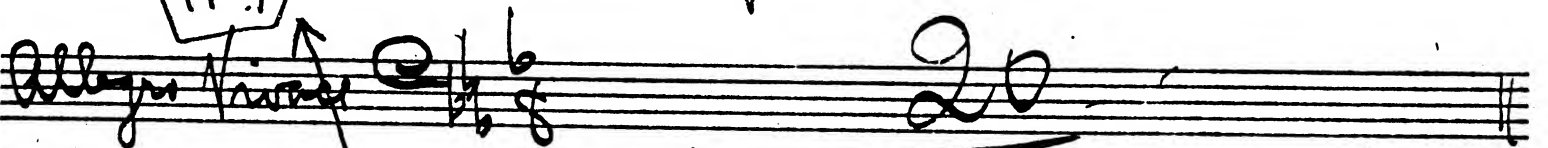
II TROMBONE
4

II TROMBONE

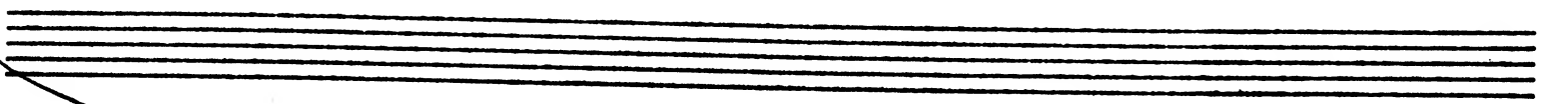
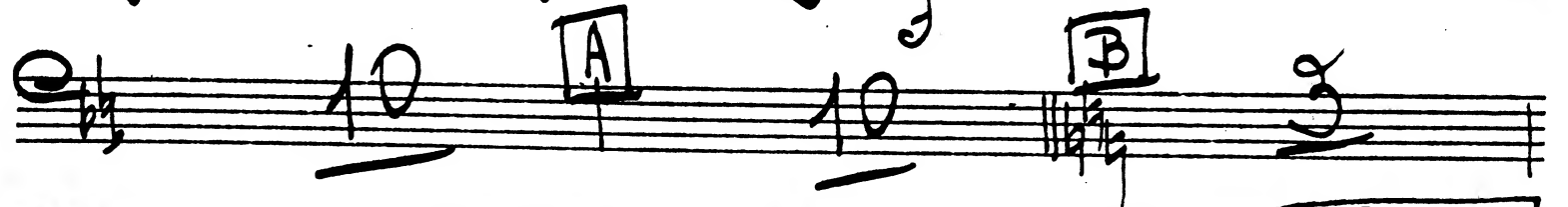
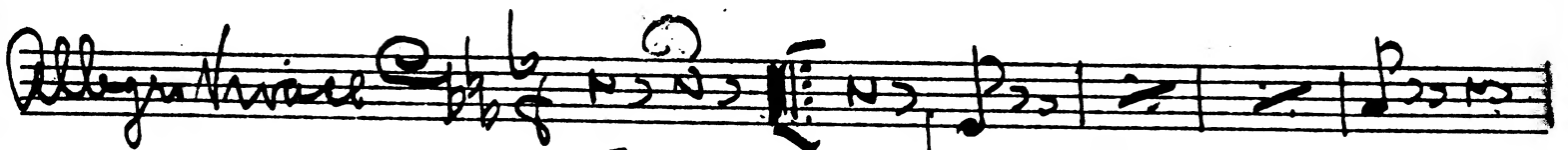
5



No. 17 Intrance of High Chancellor



Song



II TROMBONE

6

No 8 - Trio - Chorus of Peer

Allegretto
Gravissimo

A à la Barcarolle

No 9 - Quint

Moderato Eb

10

No 10 - Chorus of Peer - Song

Andante

II. Trombone

-7-

N° 11

Recit.

Allegro

Allegro non troppo

Handwritten musical score for II. Trombone, page 7. The score is written in bass clef with a key signature of two flats (B-flat and E-flat). It consists of ten staves of music. The first staff is marked 'C' and contains a '6' below it. The second staff contains '13', '10', '8', and '10' below it. The third staff contains '4', '4', and '1' below it. The fourth staff contains '4p.' and 'f' below it. The fifth staff contains '1' and 'ff' below it. The sixth staff contains '1' below it. The seventh staff contains 'L' below it. The eighth staff contains 'p' below it. The ninth staff contains 'p' below it. The tenth staff contains a double bar line and a fermata above it. The score includes various musical notations such as notes, rests, slurs, and dynamic markings like 'p', 'f', 'cresc.', and 'ff'. There are also rehearsal marks labeled C through L.

II. Trombone

- 8 -

N° 12 Tacet

N° 13 Finale Act I.

moderato

Musical staff with measures 1-4. Measure 1 is marked with a circled '1'. Measure 4 is marked with a circled '4'. A box labeled 'A' is placed above measure 2.

Allegro agitato

Musical staff with measures 5-11. Measure 5 is marked with a circled '1'. Measure 11 is marked with a circled '11'. A box labeled 'C' is placed above measure 7. A violin part is written in treble clef starting at measure 11.

Viol.

Musical staff with measures 12-19. Measure 12 is marked with a circled '1'. Measure 19 is marked with a circled '19'. A box labeled 'D' is placed above measure 17. Dynamics include *f* and *mf*.

Più vivo

Musical staff with measures 20-29. Measure 20 is marked with a circled '1'. Measure 29 is marked with a circled '29'. A box labeled 'E' is placed above measure 27. Dynamics include *mf*.

Andante

Musical staff with measures 30-35. Measure 30 is marked with a circled '3'. Measure 35 is marked with a circled '15'. A box labeled 'G' is placed above measure 33. The tempo is marked *Andante* in 4/4.

Recit.

Allegro

Allegretto

Musical staff with measures 36-41. Measure 36 is marked with a circled '15'. Measure 41 is marked with a circled '1'. A box labeled 'J' is placed above measure 37. The tempo is marked *Allegro* and *Allegretto*.

1° | 2° Allegro con br̄sa

Musical staff with measures 42-49. Measure 42 is marked with a circled '8'. Measure 49 is marked with a circled '8'. A box labeled 'K' is placed above measure 43. The tempo is marked *Allegro con br̄sa*.

Musical staff with measures 50-59. A box labeled 'M' is placed above measure 50. The tempo is marked *Allegro con br̄sa*.

Musical staff with measures 60-69. The tempo is marked *Allegro con br̄sa*.

Musical staff with measures 70-79. The tempo is marked *Allegro con br̄sa*.

II Trombone

- 9 -

N Recit **O**

3 14

Q *Più viyo* **R** **S** **T**

13 10 8 16 14

U **V** **W**

9 12 6

Allegro vivace **X**

3 15 16

Y **Z** **Aa** *1.*

13 19 6

2. *3.* *4.*

2 3 4

B

1 2 3 4 1 2 3 4

1. *2.* *3.* *4.* *1.* *2.* *3.* *4.*

5 6 7 8 1 2 3 4

C *2.* *3.*

5 6 7 8 2 3

4. *5.*

4 5 6 7 8 9 10

D **E** **F** **G**

8 9 13 10

H

3 4 5 6 7 8 9 10

II. Trombone.

First musical staff with notes and rests.

Second musical staff with notes, rests, and dynamic marking *pp*. Includes rehearsal marks **I** and **K** with measures 6, 10, and 18 indicated.

Third musical staff with notes and rests.

Fourth musical staff with notes and rests. Includes the text *Competitive examination* and dynamic marking *ff*. Tempo marking *Allegro molto* is positioned above the staff.

Fifth musical staff with notes and rests.

Allegro marziale

Sixth musical staff with notes and rests. Includes dynamic marking *ff* and first endings marked 2., 3., and 4.

Seventh musical staff with notes and rests. Includes dynamic marking *sf*.

Eighth musical staff with notes and rests.

Ninth musical staff with notes and rests. Includes rehearsal marks **L** and **M** with measure 8 indicated.

Tenth musical staff with notes and rests. Includes rehearsal mark **N** with measures 3 and 4 indicated.

Eleventh musical staff with notes and rests.

Twelfth musical staff with notes and rests. Includes rehearsal mark **O** with measure 16 indicated.

II Trombone

11

Q 2. 3. 4. 2. 3 4.

R 2. 3. 4.

S sf

T

U

V f

U 2. 3. 4.

II TROMBONE
12

Act Two

No 1 - Introduction + Song

Allegretto Moderato $\text{C} \flat \text{ 2/4}$

14

B Moderato $\text{C} \flat \text{ 2/4}$ 15 $\text{C} \flat \text{ 2/4}$ 16 $\text{C} \flat \text{ 2/4}$ 17 $\text{C} \flat \text{ 2/4}$ 18

1^o Tempo $\text{C} \flat \text{ 2/4}$ 19 $\text{C} \flat \text{ 2/4}$ 20

I $\text{C} \flat \text{ 2/4}$ 21 $\text{C} \flat \text{ 2/4}$ 22 $\text{C} \flat \text{ 2/4}$ 23 $\text{C} \flat \text{ 2/4}$ 24 **II** $\text{C} \flat \text{ 2/4}$ 25 $\text{C} \flat \text{ 2/4}$ 26

No 2 - Ghoro of Javies + Poro - Tact

No 3 - Song

Maestros $\text{C} \sharp \text{ 3/4}$

$\text{C} \sharp \text{ 3/4}$ 11 $\text{C} \sharp \text{ 3/4}$ 12 $\text{C} \sharp \text{ 3/4}$ 13 $\text{C} \sharp \text{ 3/4}$ 14 $\text{C} \sharp \text{ 3/4}$ 15 $\text{C} \sharp \text{ 3/4}$ 16

III TIME

$\text{C} \sharp \text{ 3/4}$ 17 $\text{C} \sharp \text{ 3/4}$ 18 $\text{C} \sharp \text{ 3/4}$ 19 $\text{C} \sharp \text{ 3/4}$ 20 $\text{C} \sharp \text{ 3/4}$ 21 $\text{C} \sharp \text{ 3/4}$ 22

I TIME

II TROMBONE
13

No 4, 5, 6 + 7 Paul

No 8 - Trio

Tempo di Valse 3/4

No 9. Duet - Tact

No 10 Recit + Ballad - Tact

No 11 - Recitative

Recit $\text{c} = \text{c}$ $\frac{4}{4}$ **A** *triste* 1 $\text{b} = \text{b}$ $\frac{4}{4}$ 5

B $\frac{3}{4}$ **C** $\frac{7}{8}$ **D** *Andante Mod.* 6

$\frac{3}{8}$ *Andante* **E** 9 **F** 6

G $\frac{3}{8}$ **H** $\frac{5}{8}$ pp

II TROMBONE
15

No 12 - Finale II

Tempo di Valze

Handwritten musical score for Trombone II, No. 12 - Finale II. The score consists of ten staves of music. The first staff begins with the tempo marking "Tempo di Valze" and a 3/4 time signature. The key signature is two sharps (F# and C#). The music features various rhythmic patterns, including eighth and sixteenth notes, and rests. There are several boxed annotations: "A" on the second staff, "B" on the third staff, and "P" on the fourth staff. The piece concludes with a double bar line on the tenth staff.

Fine